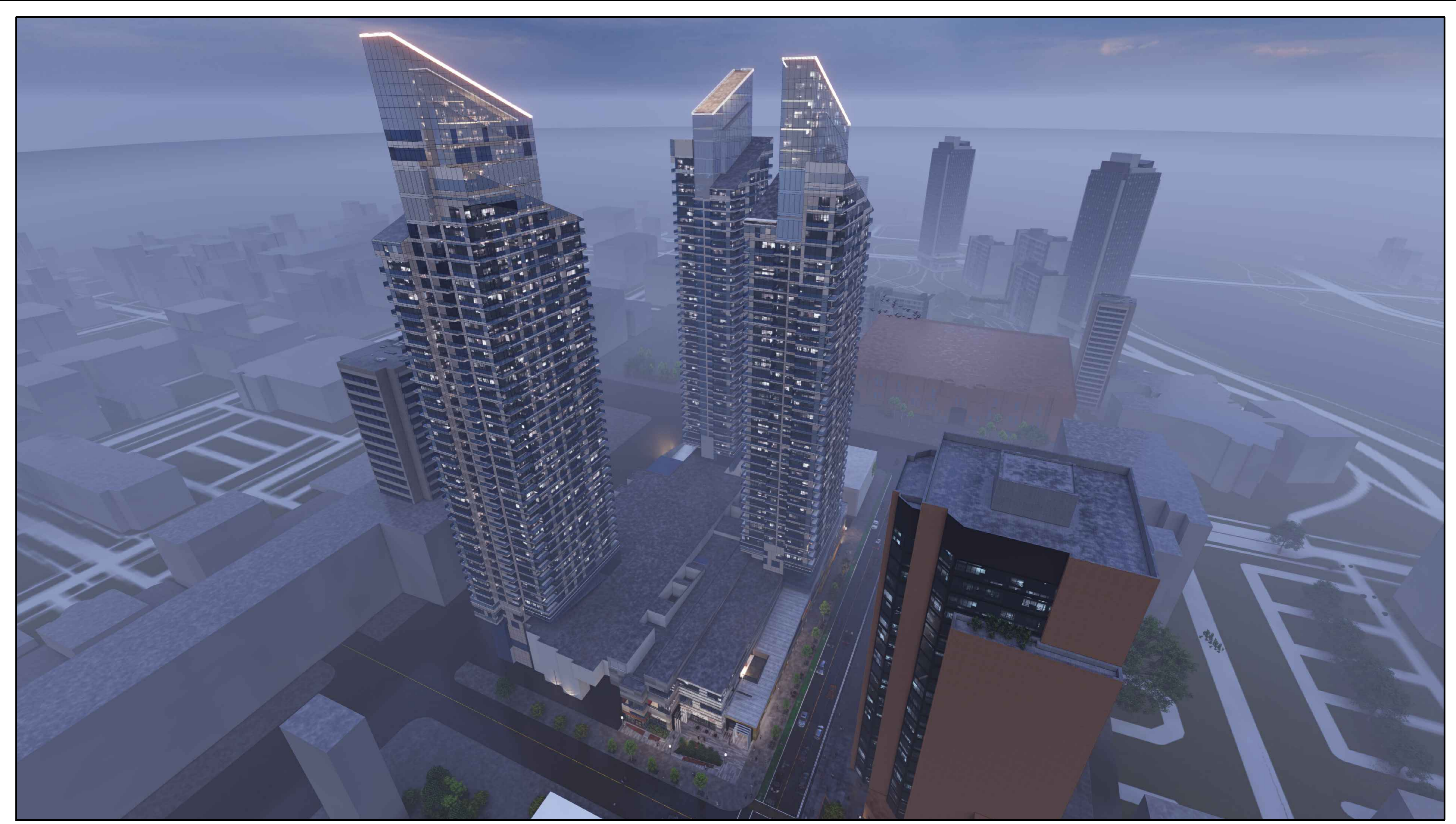


DATE	ISSUED FOR	REV
2023-04-13	DEVELOPMENT PERMIT	A
2023-09-26	DP RESUBMISSION - DTR1	B
2023-11-17	DP RESUBMISSION - DTR1	C



ARTIST RENDERING. FOR REFERENCE ONLY.

WEST VILLAGE TOWERS

9th AVENUE / 11th STREET / 8th AVENUE SW
CALGARY, ALBERTA, CANADA

NORR JOB NO: NCCA-22-0192

PHASE 3 - ISSUED FOR DEVELOPMENT PERMIT - DTR1
NOVEMBER 17th, 2023

NORR

2300, 411 - 1st Street SE,
Calgary, AB Canada T2G 4Y5
norr.com

NORR ARCHITECTS ENGINEERS PLANNERS
A Partnership of Limited Companies

Bruce G. McKenzie, Architect, AAA, AIBC, SAA
A. Silvio Battistone, Architect, AAA, AIBC, OAA
Adrian Todosh, P.Eng., APEGA
Chris Pini, P.Eng., APEGA

This drawing has been prepared solely for the use of the CLIENT and there are no representations of any kind made by NORR Architects Engineers Planners to any party with whom NORR Architects Engineers Planners has not entered into a contract.
This drawing shall not be used for construction purposes until the seal appearing hereon is signed and dated by the Architect or Engineer.

Project Component
PHASE 3 - DEVELOPMENT PERMIT
Key Plan

Consultants
Civil: Richview Engineering Inc.
Landscape: Scatiff Miller Murray Inc.
Architectural: NORR Architects Engineers Planners
Structural: Goldman Simpson
Mechanical:
Electrical: NORR Architects Engineers Planners

Seal(s)

NORR

2300, 411 - 1st Street SE
Calgary, AB, Canada T2G 4Y5
norr.com

NORR Architects Engineers Planners
A Partnership of Corporations

Jonathan Hughes, Architect, AAA, OAA, AIBC, SAA, ASAE, ASPE
Adrian Todosh, P.Eng., APEGA
Chris Pini, P.Eng., APEGA

Project Manager	Drawn
J.LACKMAN	F.A.R./J.C.P.M.C.B.T.
Project Leader	Checked
F.ABISTIV.B.TEZUKA	F.A.B.T./J.L.
Client	

CIDEX Developments Ltd.
1301 - 9th AVE S.W.
CALGARY, AB T3H 0H9

Project
WEST VILLAGE TOWERS
PHASE 3 - MIXED USE
887 10TH ST. S.W.
CALGARY, AB

Drawing Title
PROJECT COVER

Check Scale (may be photo reduced)
0 1inch 0 10mm

Project No. NCCA22-0192-01

Drawing No. DP00-00

SURVEY	CIVIL	ARCHITECTURAL	STRUCTURAL	GEOTECHNICAL
KELLAM BERG ENGINEERING & SURVEYS LTD. 5800 - 1A ST. SW CALGARY, ALBERTA T2H 0G1 PHONE: 403 640 0900 FAX: 403 640 0678	RICHVIEW ENGINEERING Suite 201, 203 38th Ave NE CALGARY, ALBERTA T2E 2M3 PHONE: 403 230 3218 FAX: 403 230 3208	NORR ARCHITECTS ENGINEERS PLANNERS SUITE 100, 221 - 10th AVE. S.E. CALGARY, ALBERTA T2G 0V9 PHONE: 403 264 4000 FAX: 403 269 7215	GLOTMAN SIMPSON CONSULTING ENGINEERS #4022, 909 17 th AVENUE SW CALGARY, ALBERTA T2T 0A4 PHONE: 403 930 2100 FAX: 403 930 2101	GLOBAL ENGINEERING & TESTING Ltd. #15 - 3500 27th St. N.E. CALGARY, ALBERTA T1Y 5E1 PHONE: 403 291 5091 FAX: 403 291 9729
MECHANICAL	ELECTRICAL	INTERIOR	LANDSCAPE	
	NORR ARCHITECTS ENGINEERS PLANNERS SUITE 100, 221 - 10th AVE. S.E. CALGARY, ALBERTA T2G 0V9 PHONE: 403 264 4000 FAX: 403 269 7215		SCATLIFF MILLER MURRAY INC. 815 - 1st STREET S.W. CALGARY, ALBERTA T2P 1N3 PHONE: 403 262 9744	

PLOT DATE: November 17, 2023 TIME: 4:15 PM FULL PATH AND FILENAME: P:\NCCA22\0192 - WEST VILLAGE TOWERS\0308\DEVELOPMENT\PHASE 3\ISSUED FOR PERMIT\DP00-00.DWG PLOT STYLE TABLE: ---


DATE	ISSUED FOR	REV
2023-04-13	DEVELOPMENT PERMIT	A
2023-09-26	DP RESUBMISSION - DTR1	B
2023-11-17	DP RESUBMISSION - DTR1	C

This drawing has been prepared solely for the use of the CLIENT and there are no representations of any kind made by NORR Architects Engineers Planners to any party with whom NORR Architects Engineers Planners has not entered into a contract.
 This drawing shall not be used for construction purposes until the seal appearing hereon is signed and dated by the Architect or Engineer.

Project Component
PHASE 3 - DEVELOPMENT PERMIT
 Key Plan

Consultants
 Civil: Richview Engineering Inc.
 Landscape: Scatiff Miller Murray Inc.
 Architectural: NORR Architects Engineers Planners
 Structural: Goldman Simpson
 Mechanical:
 Electrical: NORR Architects Engineers Planners

Seal(s)



2300, 411 - 1st Street SE
 Calgary, AB, Canada T2G 4V5
 norr.com

NORR Architects Engineers Planners
 A Partnership of Corporations

Professional Engineers, Architects, AIA, OAA, ASE, MAA, ASAE, ASPE
 Member: National Fire Protection Association
 Chartered: F.R.I., A.P.E.A.

Project Manager: J. JACKMAN
 Project Leader: F. ARISTOVI
 Client: CIDEX Developments Ltd.

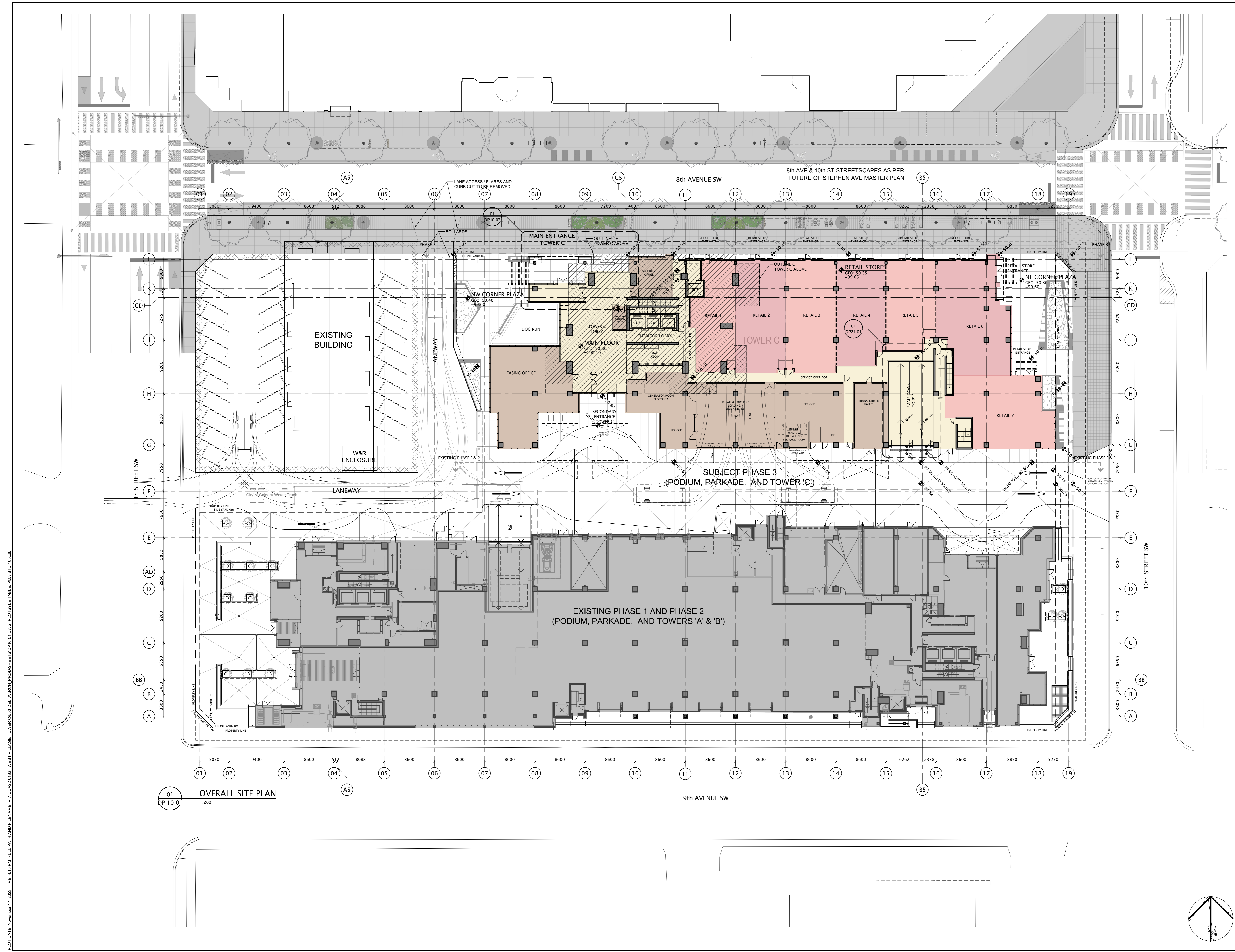
CIDEX Developments Ltd.
 1301 - 9th AVE S.W.
 CALGARY, AB T3H 0H9

Project
WEST VILLAGE TOWERS
 PHASE 3 - MIXED USE
 887 10TH ST. S.W.
 CALGARY, AB

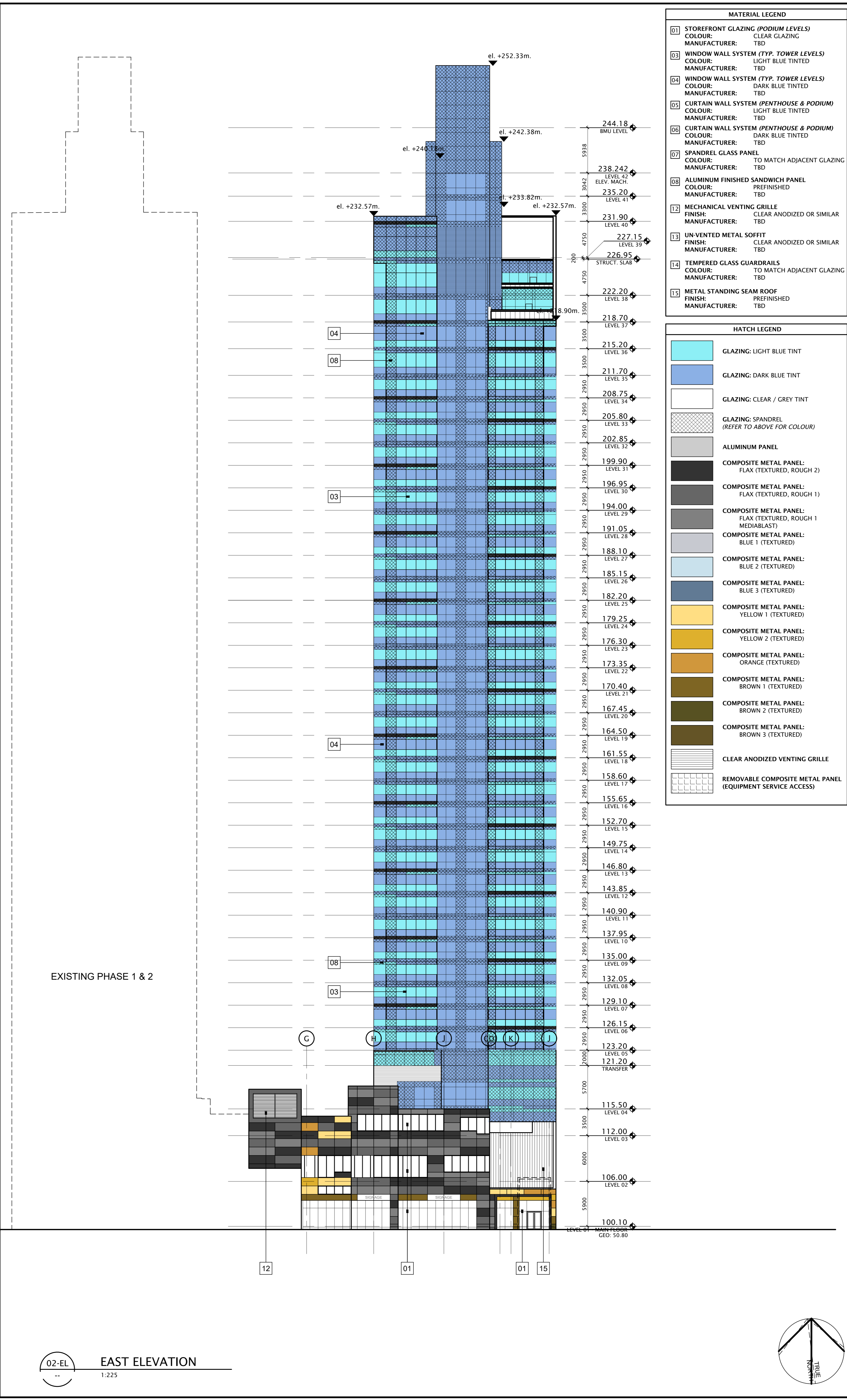
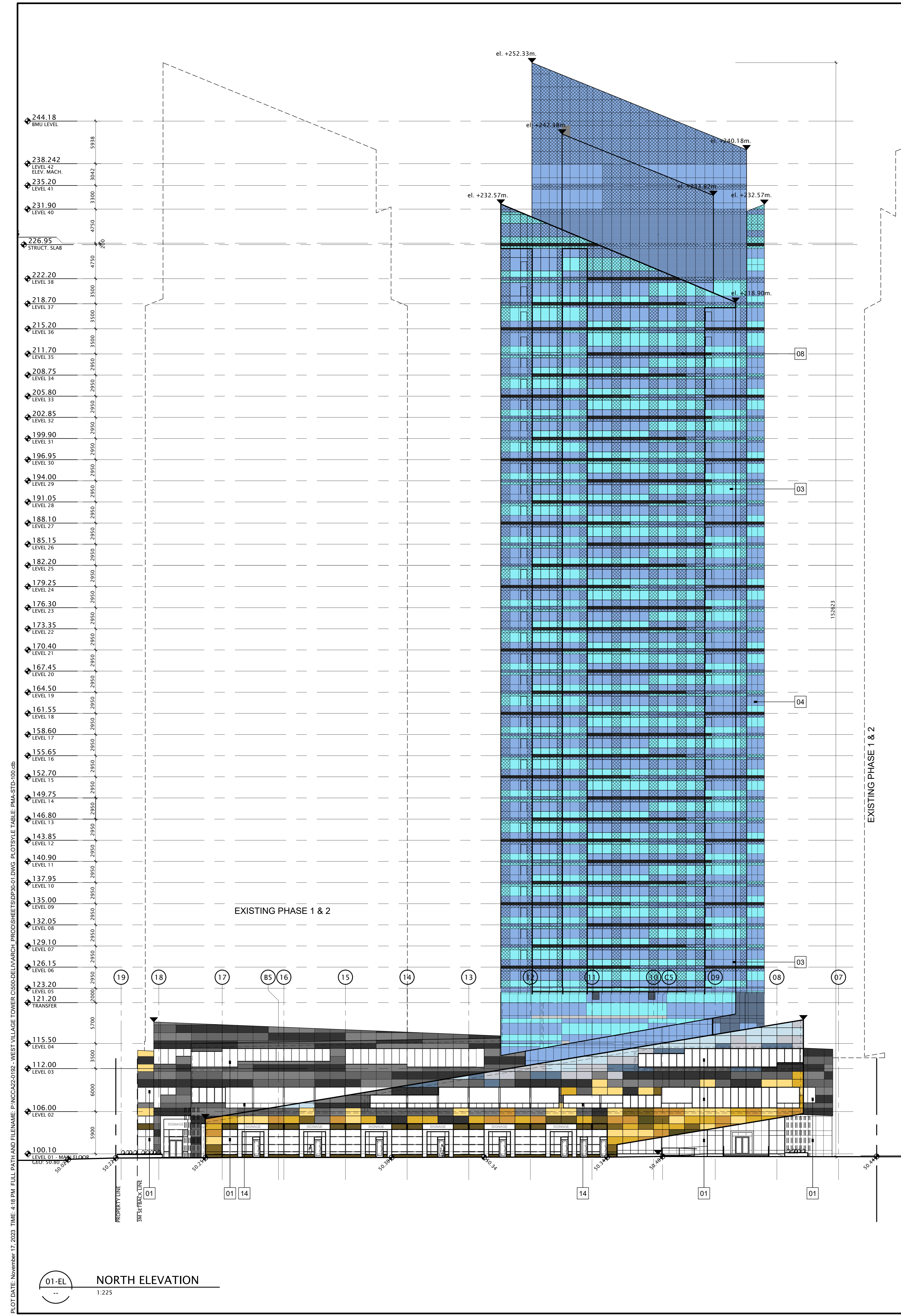
Drawing Title
OVERALL SITE PLAN

Check Scale (may be photo reduced)
 0 1m 10m

Project No. NCCA22-0192-01
 Drawing No. DP-10-01



PLOT DATE: November 17, 2023, TIME: 4:15 PM, FULL PATH AND FILENAME: P:\NCCA22\0192 - WEST VILLAGE TOWERS\0808\DEVELOPMENT\PROCSHEETS\DP-10-01.DWG, PLOTSHEET: P:\NCCA22\0192 - WEST VILLAGE TOWERS\0808\DEVELOPMENT\PROCSHEETS\DP-10-01.DWG, PLOTSHEET: P:\NCCA22\0192 - WEST VILLAGE TOWERS\0808\DEVELOPMENT\PROCSHEETS\DP-10-01.DWG



MATERIAL LEGEND	
01	STOREFRONT GLAZING (PODIUM LEVELS) COLOUR: CLEAR GLAZING MANUFACTURER: TBD
03	WINDOW WALL SYSTEM (TYP. TOWER LEVELS) COLOUR: LIGHT BLUE TINTED MANUFACTURER: TBD
04	WINDOW WALL SYSTEM (TYP. TOWER LEVELS) COLOUR: DARK BLUE TINTED MANUFACTURER: TBD
03	CURTAIN WALL SYSTEM (PENTHOUSE & PODIUM) COLOUR: LIGHT BLUE TINTED MANUFACTURER: TBD
06	CURTAIN WALL SYSTEM (PENTHOUSE & PODIUM) COLOUR: DARK BLUE TINTED MANUFACTURER: TBD
07	SPANDREL GLASS PANEL COLOUR: TO MATCH ADJACENT GLAZING MANUFACTURER: TBD
08	ALUMINUM FINISHED SANDWICH PANEL COLOUR: PREFINISHED MANUFACTURER: TBD
12	MECHANICAL VENTING GRILLE FINISH: CLEAR ANODIZED OR SIMILAR MANUFACTURER: TBD
13	UN-VENTED METAL SOFFIT FINISH: CLEAR ANODIZED OR SIMILAR MANUFACTURER: TBD
14	TEMPERED GLASS GUARDRAILS COLOUR: TO MATCH ADJACENT GLAZING MANUFACTURER: TBD
15	METAL STANDING SEAM ROOF FINISH: PREFINISHED MANUFACTURER: TBD

HATCH LEGEND	
[Hatch]	GLAZING: LIGHT BLUE TINT
[Hatch]	GLAZING: DARK BLUE TINT
[Hatch]	GLAZING: CLEAR / GREY TINT
[Hatch]	GLAZING: SPANDREL (REFER TO ABOVE FOR COLOUR)
[Hatch]	ALUMINUM PANEL
[Hatch]	COMPOSITE METAL PANEL: FLAX (TEXTURED, ROUGH 2)
[Hatch]	COMPOSITE METAL PANEL: FLAX (TEXTURED, ROUGH 1)
[Hatch]	COMPOSITE METAL PANEL: FLAX (TEXTURED, ROUGH 1 MEDIA/BLAST)
[Hatch]	COMPOSITE METAL PANEL: BLUE 1 (TEXTURED)
[Hatch]	COMPOSITE METAL PANEL: BLUE 2 (TEXTURED)
[Hatch]	COMPOSITE METAL PANEL: BLUE 3 (TEXTURED)
[Hatch]	COMPOSITE METAL PANEL: YELLOW 1 (TEXTURED)
[Hatch]	COMPOSITE METAL PANEL: YELLOW 2 (TEXTURED)
[Hatch]	COMPOSITE METAL PANEL: ORANGE (TEXTURED)
[Hatch]	COMPOSITE METAL PANEL: BROWN 1 (TEXTURED)
[Hatch]	COMPOSITE METAL PANEL: BROWN 2 (TEXTURED)
[Hatch]	COMPOSITE METAL PANEL: BROWN 3 (TEXTURED)
[Hatch]	CLEAR ANODIZED VENTING GRILLE
[Hatch]	REMOVABLE COMPOSITE METAL PANEL (EQUIPMENT SERVICE ACCESS)

DATE	ISSUED FOR	REV
2023-04-13	DEVELOPMENT PERMIT	A
2023-09-26	DP RESUBMISSION - DTR1	B
2023-11-17	DP RESUBMISSION - DTR1	C

This drawing has been prepared solely for the use of the CLIENT and there are no representations of any kind made by NORR Architects Engineers Planners to any party with whom NORR Architects Engineers Planners has not entered into a contract.

This drawing shall not be used for construction purposes until the seal appearing hereon is signed and dated by the Architect or Engineer.

Project Component	
PHASE 3 - DEVELOPMENT PERMIT	
Key Plan	

Consultants	
Civil:	Richview Engineering Inc.
Landscape:	Scatiff Miller Murray Inc.
Architectural:	NORR Architects Engineers Planners
Structural:	Golman Simpson
Mechanical:	
Electrical:	NORR Architects Engineers Planners

Seal(s)

2300, 411 - 1st Street SE
Calgary, AB Canada T2G 4V5
nor.com

NORR Architects Engineers Planners
A Partnership of Corporations

Jonathan Hughes, Architect, AIA, OAA, ASCE, MAIA, ASAE, IAARE
Dustin Shivers, P.Eng., PECA
Chris Pal, P.Eng., PECA

Project Manager	J. JACKMAN	Drawn	F. A. R. J. C. P. M. C. B. T.
Project Leader	F. ARISTIV & TEZUKA	Checked	F. A. B. T. J. L.
Client			

CIDEX Developments Ltd.
1301 - 9th Ave S.W.
CALGARY, AB T3H 0H9

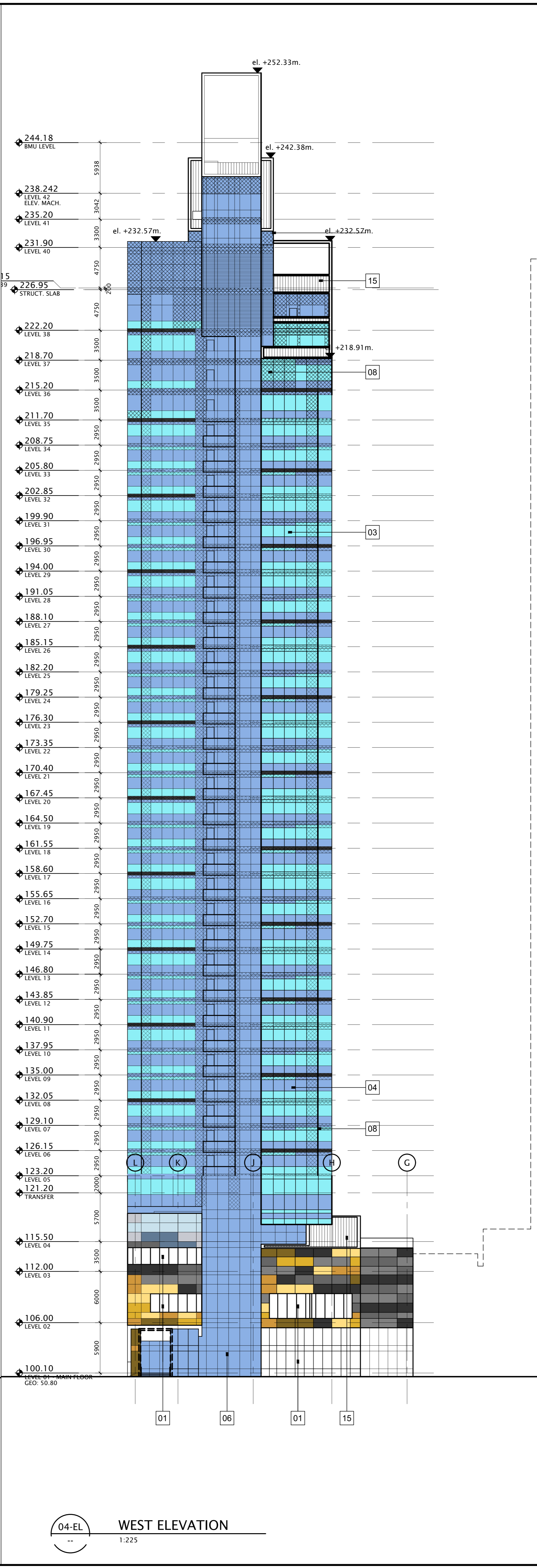
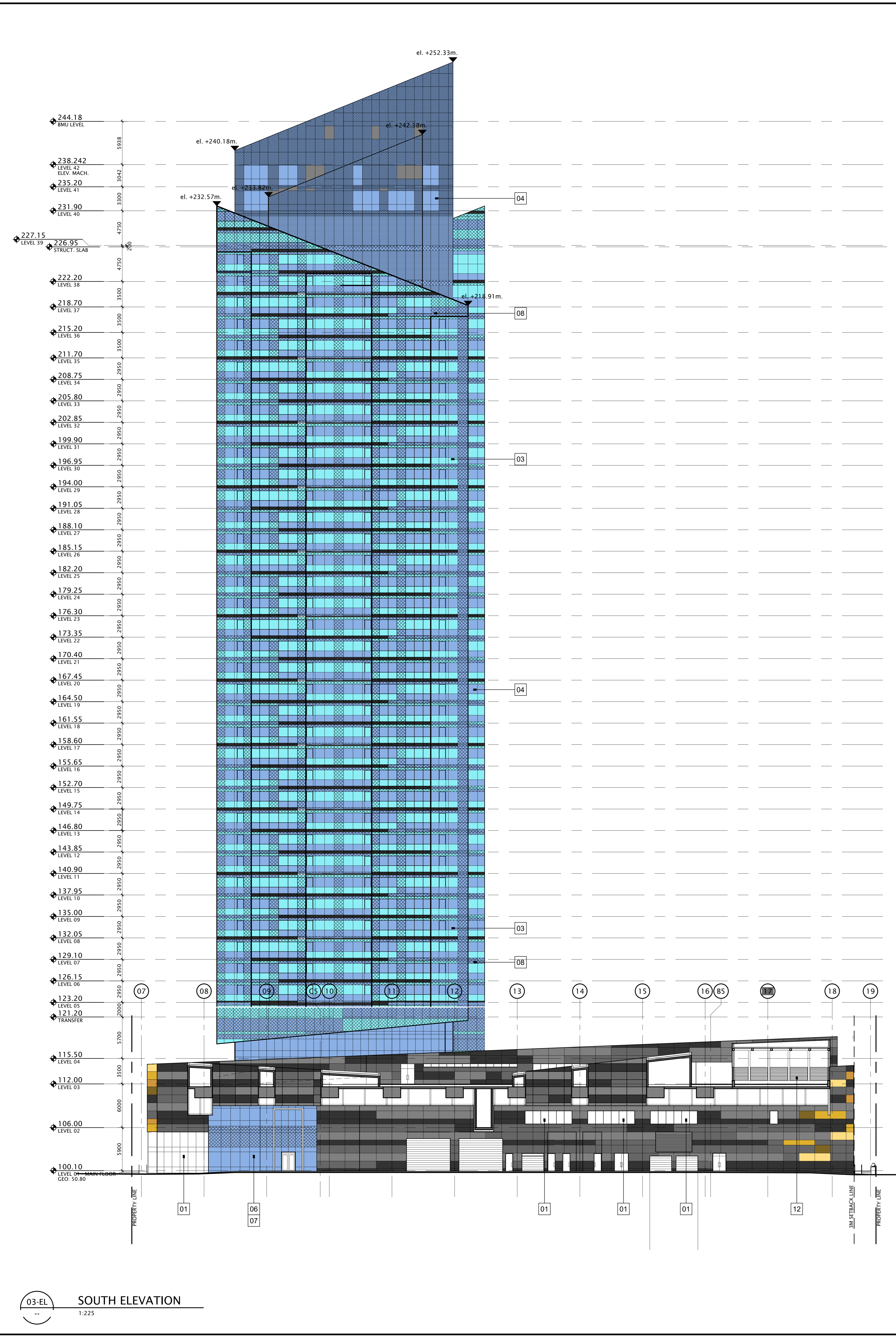
Project
WEST VILLAGE TOWERS
PHASE 3 - MIXED USE
887 10TH ST. S.W.
CALGARY, AB

Drawing Title
BUILDING ELEVATIONS

Check Scale (may be photo reduced)	0 1m 10mm
Project No.	NCCA22-0192-01
Drawing No.	DP30-01

PLOT DATE: November 17, 2023. TIME: 4:18 PM. FULL PATH AND FILENAME: P:\NCCA22\0192 - WEST VILLAGE TOWERS\0300-BUILDING\PROCSHEETS\DP30-01.DWG. PLOT STYLE TABLE: PIAA.DWG.ctb

PLOT DATE: November 17, 2023 TIME: 4:18 PM FULL PATH AND FURNISH: P:\NCCA22-0192-WEST VILLAGE TOWERS\0303-02-DWG-PLT\DWG_P\PHASE3-03-03.DWG



MATERIAL LEGEND		
01	STOREFRONT GLAZING (PODIUM LEVELS)	CLEAR GLAZING
	COLOUR:	TBD
	MANUFACTURER:	TBD
03	WINDOW WALL SYSTEM (TYP. TOWER LEVELS)	LIGHT BLUE TINTED
	COLOUR:	TBD
	MANUFACTURER:	TBD
04	WINDOW WALL SYSTEM (TYP. TOWER LEVELS)	DARK BLUE TINTED
	COLOUR:	TBD
	MANUFACTURER:	TBD
05	CURTAIN WALL SYSTEM (PENTHOUSE & PODIUM)	LIGHT BLUE TINTED
	COLOUR:	TBD
	MANUFACTURER:	TBD
06	CURTAIN WALL SYSTEM (PENTHOUSE & PODIUM)	DARK BLUE TINTED
	COLOUR:	TBD
	MANUFACTURER:	TBD
07	SPANDREL GLASS PANEL	TO MATCH ADJACENT GLAZING
	COLOUR:	TBD
	MANUFACTURER:	TBD
08	ALUMINUM FINISHED SANDWICH PANEL	PREFINISHED
	COLOUR:	TBD
	MANUFACTURER:	TBD
12	MECHANICAL VENTING GRILLE	TO MATCH ADJACENT GLAZING
	FINISH:	CLEAR ANODIZED OR SIMILAR
	MANUFACTURER:	TBD
13	UN-VENTED METAL SOFFIT	CLEAR ANODIZED OR SIMILAR
	FINISH:	TBD
	MANUFACTURER:	TBD
14	TEMPERED GLASS GUARDRAILS	TO MATCH ADJACENT GLAZING
	COLOUR:	TBD
	MANUFACTURER:	TBD
15	METAL STANDING SEAM ROOF	PREFINISHED
	FINISH:	TBD
	MANUFACTURER:	TBD

HATCH LEGEND	
[Light Blue Hatch]	GLAZING: LIGHT BLUE TINT
[Dark Blue Hatch]	GLAZING: DARK BLUE TINT
[White Hatch]	GLAZING: CLEAR / GREY TINT
[Cross-hatch]	GLAZING: SPANDREL (REFER TO ABOVE FOR COLOUR)
[Grey Hatch]	ALUMINUM PANEL
[Dark Grey Hatch]	COMPOSITE METAL PANEL: FLAX (TEXTURED, ROUGH 2)
[Light Grey Hatch]	COMPOSITE METAL PANEL: FLAX (TEXTURED, ROUGH 1)
[Medium Grey Hatch]	COMPOSITE METAL PANEL: FLAX (TEXTURED, ROUGH 1 MEDIUM)
[Light Blue Hatch]	COMPOSITE METAL PANEL: BLUE 1 (TEXTURED)
[Dark Blue Hatch]	COMPOSITE METAL PANEL: BLUE 2 (TEXTURED)
[Yellow Hatch]	COMPOSITE METAL PANEL: BLUE 3 (TEXTURED)
[Yellow Hatch]	COMPOSITE METAL PANEL: YELLOW 1 (TEXTURED)
[Orange Hatch]	COMPOSITE METAL PANEL: YELLOW 2 (TEXTURED)
[Orange Hatch]	COMPOSITE METAL PANEL: ORANGE (TEXTURED)
[Brown Hatch]	COMPOSITE METAL PANEL: BROWN 1 (TEXTURED)
[Brown Hatch]	COMPOSITE METAL PANEL: BROWN 2 (TEXTURED)
[Brown Hatch]	COMPOSITE METAL PANEL: BROWN 3 (TEXTURED)
[White Hatch]	CLEAR ANODIZED VENTING GRILLE
[Grid Hatch]	REMOVABLE COMPOSITE METAL PANEL (EQUIPMENT SERVICE ACCESS)

DATE	ISSUED FOR	REV
2023-04-13	DEVELOPMENT PERMIT	A
2023-09-26	DP RESUBMISSION - DTR1	B
2023-11-17	DP RESUBMISSION - DTR1	C

This drawing has been prepared solely for the use of the CLIENT and there are no representations of any kind made by NORR Architects Engineers Planners to any party with whom NORR Architects Engineers Planners has not entered into a contract.

This drawing shall not be used for construction purposes until the seal appearing hereon is signed and dated by the Architect or Engineer.

Project Component
PHASE 3 - DEVELOPMENT PERMIT
 Key Plan

Consultants
 Civil: Richview Engineering Inc.
 Landscape: Scatiff Miller Murray Inc.
 Architectural: NORR Architects Engineers Planners
 Structural: Goldman Simpson
 Mechanical:
 Electrical: NORR Architects Engineers Planners

Seal(s)

2300, 411 - 1st Street SE
 Calgary, AB, Canada T2G 4Y5
 norr.com

NORR Architects Engineers Planners
 A Partnership of Corporations

Jonathan Hughes, Architect, AIA, OAA, ASE, ASAE, ASAE, ASAE
 Brian Young, FRC, AFCA
 Chris Pal, FRC, AFCA

Project Manager
 J. JACKMAN F.A.R./J.C.P.M.C.B.T.
 Project Leader
 F. ARISTO & TEZUKA F.A.B.T./J.L.
 Client

CIDEX Developments Ltd.
 1301 - 9th AVE S.W.
 CALGARY, AB T3H 0H9

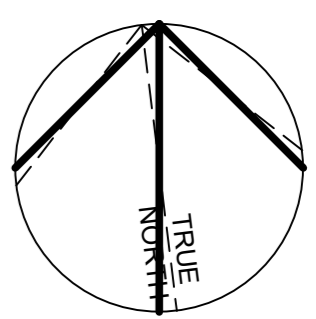
Project
WEST VILLAGE TOWERS
 PHASE 3 - MIXED USE
 887 10TH ST. S.W.
 CALGARY, AB

Drawing Title
BUILDING ELEVATIONS

Check Scale (may be photo reduced)
 0 1m 10mm

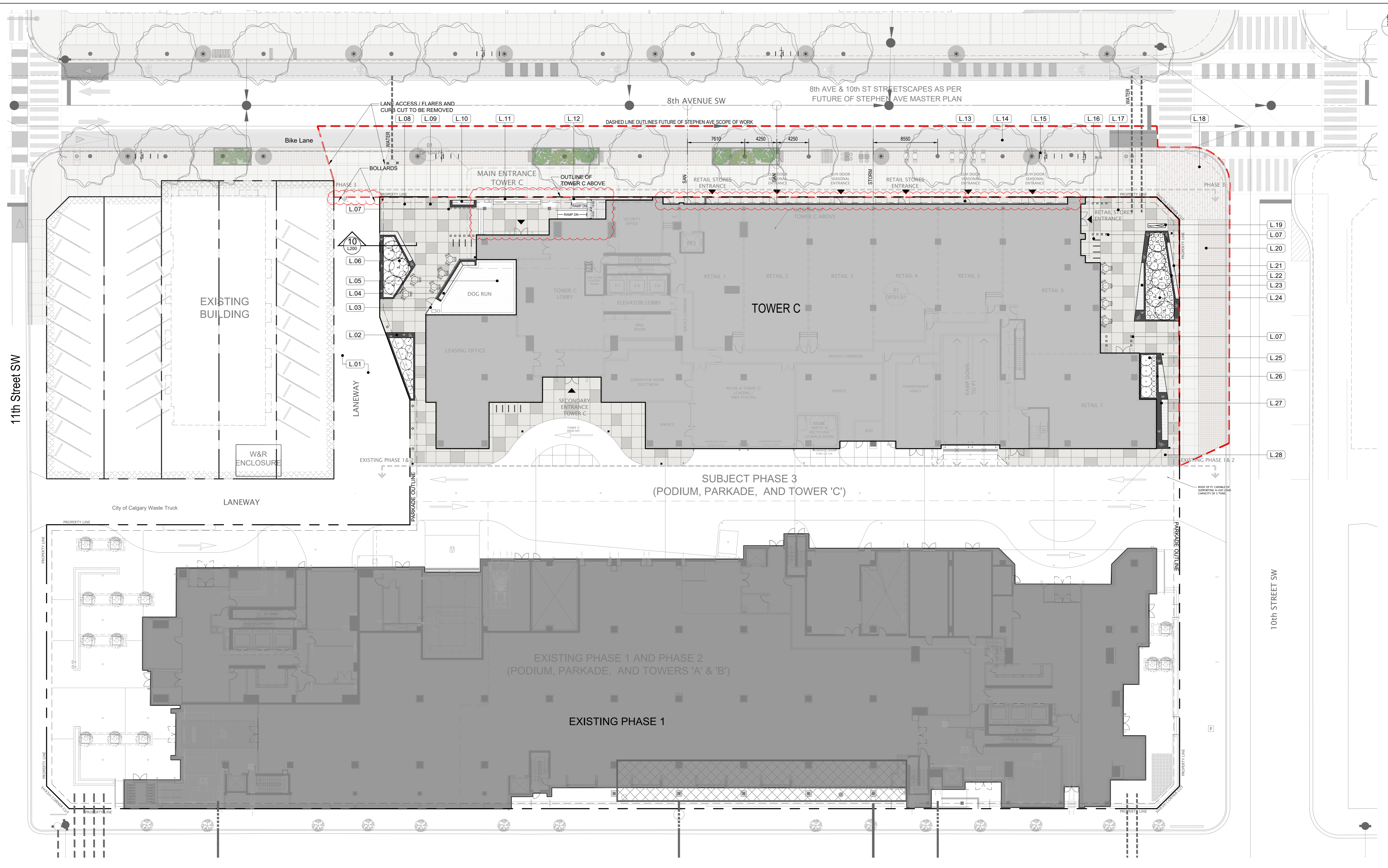
Project No.
 NCCA22-0192-01

Drawing No.
 DP30-02



DATE	ISSUED FOR	REV
2023-04-13	DEVELOPMENT PERMIT	A
2023-09-26	DTR 1	B
2023-11-21	PTR	C

[SMM]
SCATLUFF-MILLER-MURRAY INC.
403.262.9744 | SCATLUFF.CA



1 LANDSCAPE PLAN
L100 SCALE 1:200

- LABELS**
- L.01 EXISTING LANEWAY
 - L.02 450mm HT CONCRETE PLANTER W/ SEATING EDGE FACING LANEWAY
 - L.03 4' HT DECORATIVE METAL INFILL PANEL FENCE. MAGLUM FLEX-X - REFER TO 6L200
 - L.04 450mm HT SEATWALL W/ COMPOSITE WOOD SLAT BENCH + LED LIGHTING.
 - L.05 ENCLOSE DOG RUN OVER SYNTHETIC TURF
 - L.06 450mm HT PLANTER W/ INTEGRATED COMPOSITE WOOD SLAT BENCH + LED LIGHTING. CONCRETE TO HAVE PAINTED DECORATIVE ORIGAMI GRAPHIC STENCIL.
 - L.07 WALK-THROUGH OVERHEAD FEATURE W/ RECESSED LINEAR LED LIGHTS - REFER TO ARCH
 - L.08 OPEN PLAZA TO ALLOW PEDESTRIAN MOVEMENT FROM LANEWAY + STEPHEN AVE
 - L.09 DECORATIVE CONCRETE PAVING W/ SEEDED GLASS AGGREGATE. COLOUR TO MATCH STEPHEN AVE FOR INTEGRATION BETWEEN STREETSCAPE + PLAZA
 - L.10 CONCRETE BENCH W/ HDPE COMPOSITE WOOD SLATS
 - L.11 PRINCIPAL ENTRANCE TO RESIDENTIAL SUITES
 - L.12 BARRIER FREE RAMP - 8% SLOPE MAX
 - L.13 AT GRADE ACCESS TO MAIN FLOOR RETAIL UNITS. PAVING TO MATCH FUTURE OF STEPHEN AVE PAVING
 - L.14 PROPOSED RAISED BIKE LANE BY OTHERS

- L.15 PROPOSED TREE ALIGNMENT + STREET FURNISHING ZONE BY FUTURE OF STEPHEN AVENUE DESIGN TEAM
- L.16 CLASS 2 BIKE RACKS WITHIN DEVELOPMENT PROPERTY
- L.17 DECORATIVE CONCRETE PAVING W/ SEEDED GLASS AGGREGATE. COLOUR TO MATCH STEPHEN AVE FOR INTEGRATION BETWEEN STREETSCAPE + PLAZA
- L.18 CORNER BARRIER FREE ACCESS W/ ENHANCED PAVING - MATERIAL AND DETAILS TO BE DEFINED BY STEPHEN AVE PROJECT TEAM
- L.19 POTENTIAL ART/SCULPTURE LOCATION
- L.20 FUTURE OF STEPHEN AVE PAVING TO EXTEND ALONG 10TH STREET SW
- L.21 OUTLINE OF UNDERGROUND PARKADE
- L.22 STREET FACING INTEGRATED COMPOSITE WOOD SLAT BENCH W/ LED LIGHTING
- L.23 PLAZA FACING INTEGRATED COMPOSITE WOOD SLAT BENCH W/ LED LIGHTING
- L.24 450mm HT CONCRETE PLANTER W/ TREES, SHRUBS, AND ORNAMENTAL GRASSES CONCRETE TO HAVE PAINTED DECORATIVE ORIGAMI GRAPHIC STENCIL
- L.25 SHRUB + PERENNIAL PLANTER
- L.26 CONCRETE PLANTER WITH STENCILED ORIGAMI GRAPHICS
- L.27 INTEGRATED WOOD SLAT BENCH + LED LIGHTING
- L.28 PEDESTRIAN CONCRETE WALKWAY TO BACK OF BUILDING

- LEGEND**
- DECORATIVE CONCRETE. COLOUR TO MATCH STEPHEN AVE CONCRETE PAVING W/ RECYCLE GLASS AGGREGATE SEEDING INTO CONCRETE + LIGHT SANDBLAST FINISH
 - DECORATIVE CONCRETE. COLOUR TO MATCH STEPHEN AVE CONCRETE PAVING W/ RECYCLE GLASS AGGREGATE SEEDING INTO CONCRETE + HEAVY SANDBLAST FINISH
 - STANDARD GREY CONCRETE W/ LIGHT SANDBLAST FINISH
 - K-9 SYNTHETIC TURF
 - Ø8 - RENAISSANCE BIRCH - 50MM CAL.
 - FALSE SPIREA
 - OSTRICH FERN
 - LITTLE REBEL DOGWOOD
 - TUFTED HAIR GRASS
 - CUSTOM CLASS 2 BIKE RACKS 13 RACKS 26 STALLS TOTAL PROPOSED BIKE RACKS NOT WITHIN PUBLIC REALM. LOCATION WITHIN PROPERTY LIMITS. BIKE RACKS SHOWN ON STEPHEN AVE BY OTHERS

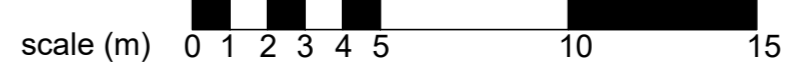
PLANT LIST: DECIDUOUS TREES

KEY	SCIENTIFIC NAME	COMMON NAME	PLANTING NOTES	QTY.
Bp	Betula papyrifera 'Reno'	RENAISSANCE REFLECTION BIRCH	75mm CAL. B&B, MIN 500mm wd x 400mm DEPTH ROOT BALL	08

PLANT LIST: SHRUBS + PERENNIALS

KEY	SCIENTIFIC NAME	COMMON NAME	PLANTING NOTES	QTY.
ca	Cornus alba 'Jefreb'	LITTLE REBEL DOGWOOD	#5 CONT. MIN 800-1000mm ht. MIN. 4 MAJOR BASAL STEMS.	13
ss	Sorbaria sorbifolia	FALSE SPIREA	#5 CONT. MIN 800-1000mm ht. MIN. 4 MAJOR BASAL STEMS.	11
bn	Deschampsia cespitosa	TUFTED HAIR GRASS	#3 POT	56
ms	Matteuccia struthiopteris	NATIVE OSTRICH FERN	#3 POT	19

- GENERAL NOTES**
- ALL PLANT MATERIAL SHALL MEET THE STANDARDS OF THE CANADIAN NURSERY TRADES ASSOCIATION (CNTA) AND BE TRUE TO TYPE AND SPECIES.
 - ALL PLANT MATERIAL SHALL BE LOCALLY GROWN ALBERTA NURSERY STOCK.
 - ALL PLANT MATERIAL TO BE DISEASE FREE AND TRUE TO FORM SPECIMEN GRADE SINGLE STEM STOCK UNLESS OTHERWISE NOTED.
 - LANDSCAPE ARCHITECT RESERVES THE RIGHT TO REJECT ANY AND ALL PLANT MATERIAL THAT DOES NOT MEET THESE REQUIREMENTS LANDSCAPE ARCHITECT SHALL INSPECT PLANT MATERIAL PRIOR TO INSTALLATION FOR NURSERY DEFECTS, TRANSPORT DAMAGE & ROOTBALL SIZE.
 - THE CONTRACTOR SHALL STAKE ALL TREE LOCATIONS ON SITE TO BE INSPECTED AND APPROVED BY THE LANDSCAPE ARCHITECT PRIOR TO INSTALLATION.
 - ALL SHRUBS TO BE A MINIMUM OF 500mm IN HEIGHT OR SPREAD AT THE TIME OF PLANTING.
 - TREE TOPSOIL DEPTH TO BE 1200mm DEPTH MINIMUM
 - SHRUB TOPSOIL DEPTH TO BE 500mm DEPTH MINIMUM
 - ALL SHRUB MATERIAL AND CONIFEROUS TREES TO BE LOCATED WITHIN MULCHED BEDS.
 - MULCH TO BE CLEAN CONIFEROUS TREE MULCH AND SHALL BE INSTALLED NO MORE THAN 75mm DEPTH AND SHALL BE PULLED AWAY FROM TREE AND SHRUB GROWING.
 - ALL LANDSCAPED AREAS WITHIN DEVELOPMENT PROPERTY ARE TO BE IRRIGATED BY A LOW WATER IRRIGATION SYSTEM
 - STREET TREES ARE NON IRRIGATED



PLOT DATE: November 17, 2023 TIME: 10:18 AM FULL PATH AND FILENAME: C:\USERS\BAPTISTE\WORKSPACE - SCATLUFF + MILLER - MURRAY\NEW FOLDER\WEST VILLAGE\PLANS\PHASE3 (02) - SMM REVIEWING PHOTO STYLE TABLE ----

This drawing has been prepared solely for the use of the CLIENT and there are no representations of any kind made by NORR Architects Engineers Planners to any party with whom NORR Architects Engineers Planners has not entered into a contract.

This drawing shall not be used for construction purposes until the seal appearing hereon is signed and dated by the Architect or Engineer.

Project Component
PHASE 3 - DEVELOPMENT PERMIT

Keyplan

Consultants

- Civil: Richview Engineering Inc.
- Landscape: Scatloff + Miller + Murray
- Architectural: NORR Architects Engineers Planners
- Structural: Goldman Simpson
- Mechanical: TLJ Engineering
- Electrical: TLJ Engineering

Seal(s)

NORR

2300, 411 - 1st Street SE
Calgary, AB Canada T2G 4Y5
norr.com

NORR ARCHITECTS ENGINEERS PLANNERS
A Partnership of Limited Companies

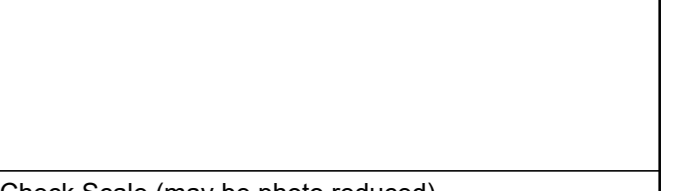
© 2023 NORR ARCHITECTS ENGINEERS PLANNERS. ALL RIGHTS RESERVED. NORR is a registered trademark of Norman Group Inc. and its associated entities.

Project Manager B.MCKENZIE	Drawn AGP
Project Leader B. TEZUKA	Checked DTM

CIDEX Developments Ltd.
1301 - 9TH AV SW
CALGARY, AB T3C 0H9

Project
WEST VILLAGE TOWERS
PHASE 3 - MIXED USE
887 10TH ST SW
CALGARY, AB

Drawing Title
LANDSCAPE PLAN



Project No. NCCA22-0192-01
Drawing No. L100

